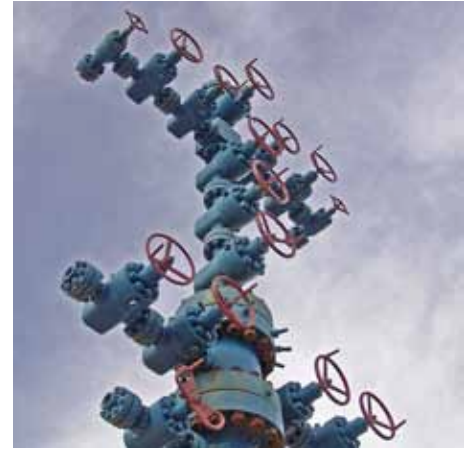


# CIMV Series

## Compact Integrated Multi DBB Valve



### Piping Isolation Double Block and Bleed for small bore tappings - Wellhead or High Pressure Pipeline

#### Features

- 15,000 PSI / 1034 bar
- Meets ISO15848 class B fugitive emissions standard
- Available in common piping alloys inc. sour gas service
- -55 to +121°C
- Meets API 6A & ASME B16.5 / B16.34
- 8 mm bore needle valve
- Fire safe to BS6755 / API607

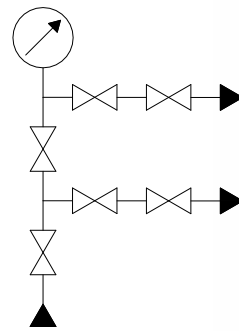
#### Benefits

- Compact size
- Reduced mass
- Reduced leak paths
- Creates higher integrity process hook-ups, for pressure transmitters and gauges
- Single weld installation

#### Product description

This **ultra low leakage** needle valve range has been designed to meet the needs of wellhead instrumentation and piping engineers configuring gauging arrangements for applications involving high pressures with sour or toxic media. Typically, welded assemblies of larger and heavier discrete valves have been employed for such applications.

FIG A



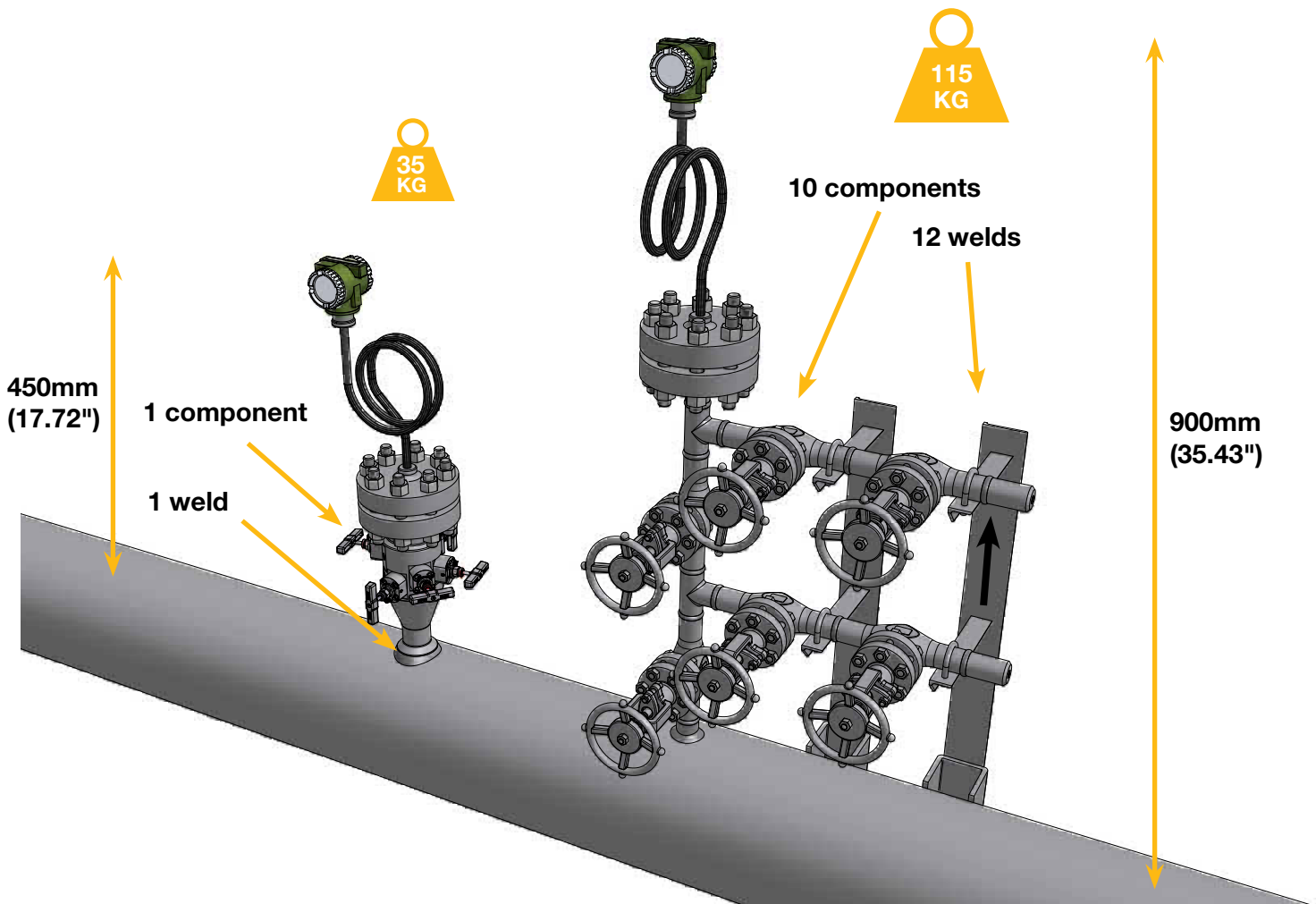
The CIMV Series provides valves with **threadless end connections** that can be used in their discrete form, or assembled into a **wide variety** of manifold arrangements such as the application specific flanged example shown in FIG A: a very high integrity block and bleed manifold for a diaphragm sealed instrument.

To support the target applications, Parker Hannifin has designed the valve to meet the **API 6A specification** for wellhead and christmas tree equipment. This valve is both light weight and compact, offering an unparalleled reduction in potential leakage. Please contact Parker Instrumentation Division to discuss your individual requirements.



ENGINEERING YOUR SUCCESS.

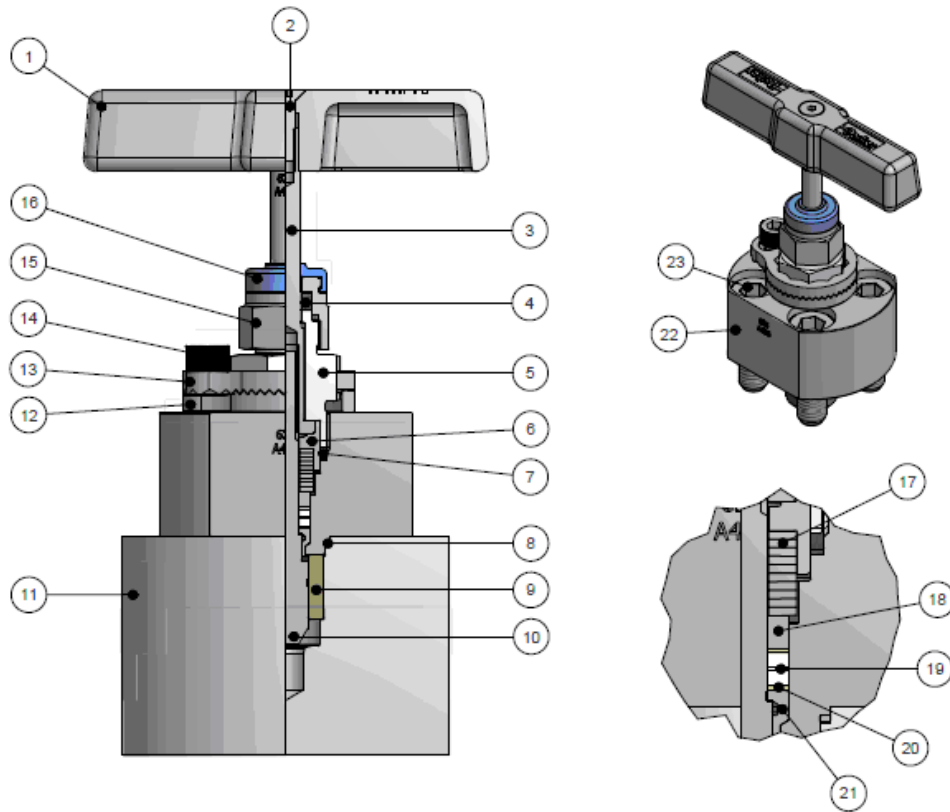
# Innovative design SMARTER, FASTER, CLEANER, SAFER.



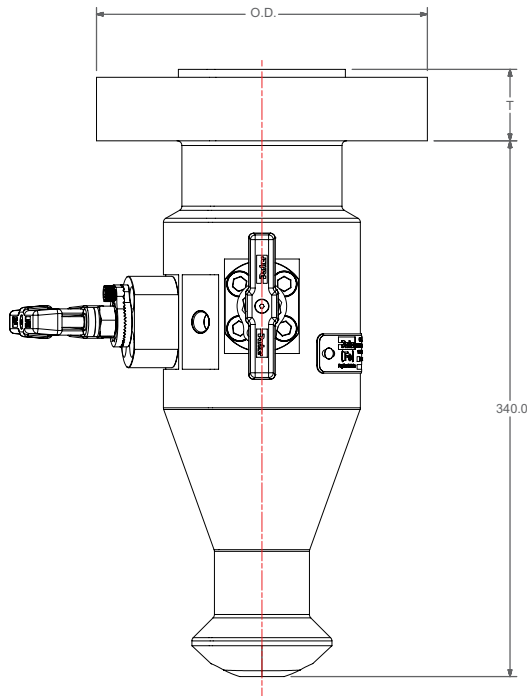
## Value proposition

SMARTER	BENEFITS
• Compact, single piece design	→ Smaller bill of materials
• Lighter mass	→ 35kg versus approximately 115kg
• Reduced infrastructure	→ Lower installation cost
FASTER	
• Fewer welds and testing	→ Reduced installation time
CLEANER	
• Fugitive emission heads to ISO15848, class B	→ Minimal environmental impact and loss of media
SAFER	
• Less potential leak paths	→ Improved operator safety
• Bubble tight shut off	→ 100% every time
• Close to shape forging	→ High strength modular construction

# Technical Features



## Side Elevation



## Parts List

ITEM	QTY	DESCRIPTION	MATERIAL
1	1	HANDLE	316 St. St.
2	1	LOCK SCREW	St. St. A4
3	1	UPPER STEM	ASTM B446 N06625
4	1	FIRESAFE PACKING	Graphite
5	1	GLAND ADJUSTER	625
6	1	COMPRESSION SLEEVE	625
7	1	FIRESAFE PACKING	Graphite
8	1	JOINT SEAL	625
9	1	STEM FOLLOWER	PEEK
10	1	LOWER STEM	ASTM B637 N07718
11	1	BODY - REF ONLY	
12	1	LOWER LOCK PLATE	316 St. St.
13	1	UPPER LOCK PLATE	316 St. St.
14	1	LOCK SCREW	St. St. A4
15	1	FIRESAFE ADJUSTER	625
16	1	DUST CAP	LDPE
17	10	SPRING WASHER	300 Series. St. St.
18	1	THRUST BUSH	316 St. St.
19	2	GLAND PACKING	PTFE
20	2	THRUST SEALS	PEEK
21	1	LOWER STEM GUIDE	625
22	1	BOLTED BONNET	625
23	4	BONNET BOLTING	A193M-B8M

INSTRUMENT CONNECTION		APPLICABLE STANDARD	O.D.		T		MASS (Kg)
FLANGE	RING GROOVE						
2" N.B. x CLASS 1500, RTJ	R24	ASME B16.5	215.9	(8.50")	46.0	(1.81")	34.6
2" N.B. x CLASS 2500, RTJ	R26	ASME B16.5	235.3	(9.26")	58.7	(2.31")	40.3
1 13/16" (46) x 10,000 PSI (69.0 Mpa)	BX151	API 6A	185.0	(7.28")	42.1	(1.66")	31.5
1 13/16" (46) x 15,000 PSI (103.5 Mpa)	BX151	API 6A	210.0	(8.27")	45.3	(1.78")	34.3

---

© 2008 Parker Hannifin Corporation. All rights reserved.

**Parker Hannifin Ltd.**

Instrumentation Products Division  
Riverside Road, Pottington Business Park,  
Barnstaple, Devon, EX31 1NP  
United Kingdom  
Tel.: +44 (0) 1271 31 31 31  
Fax: +44 (0) 1271 37 36 36  
[www.parker.com/ipd](http://www.parker.com/ipd)

CATALOGUE REF: 4190-CIMV

